

ETERNAL LIGHT MEMORIAL GARDENS - V

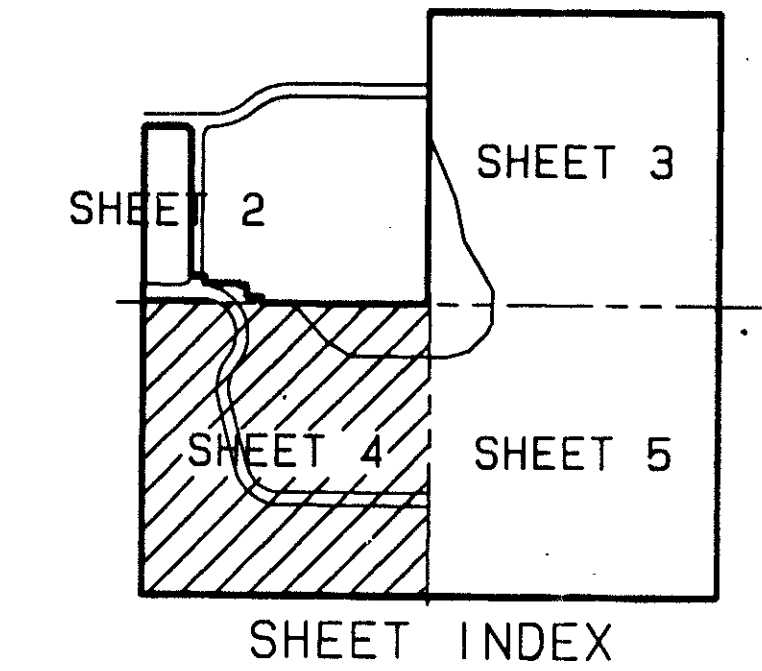
0416-003

72

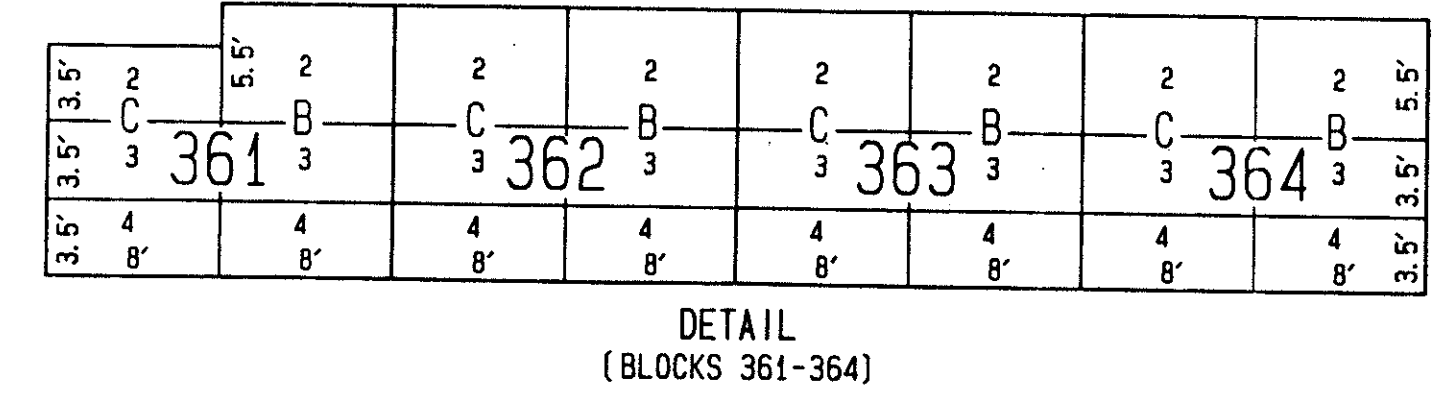
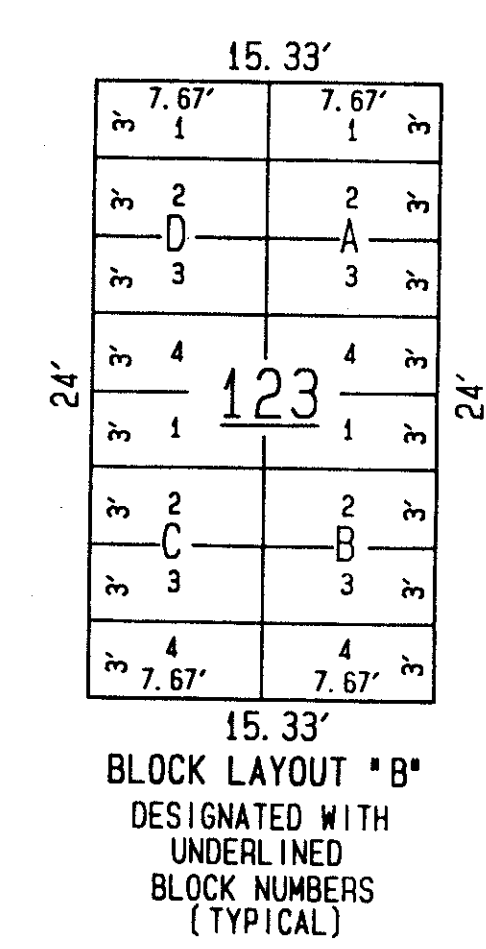
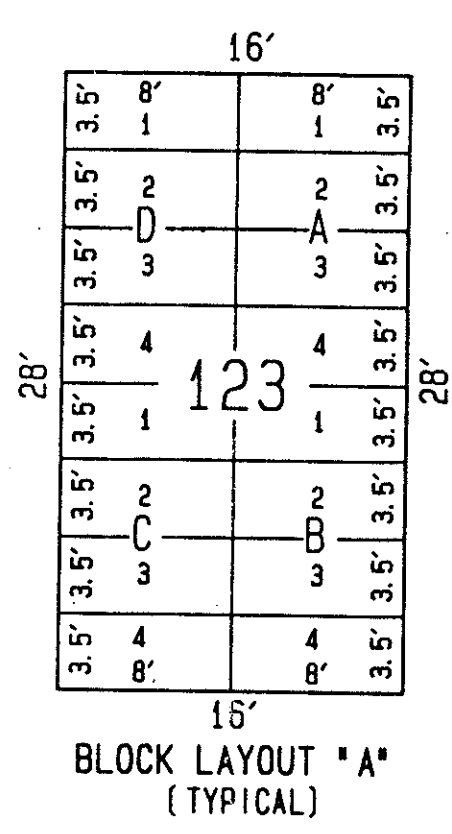
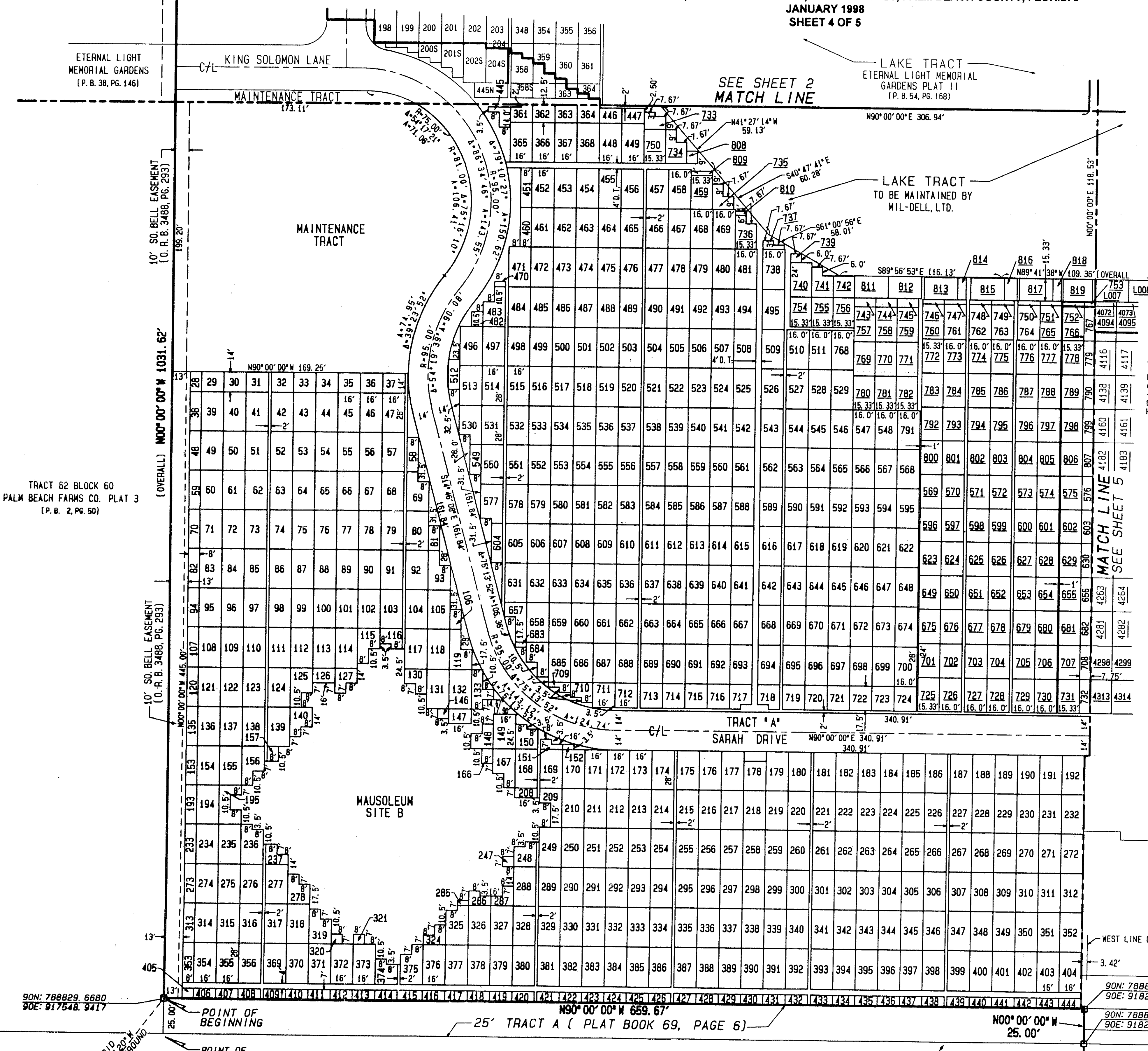
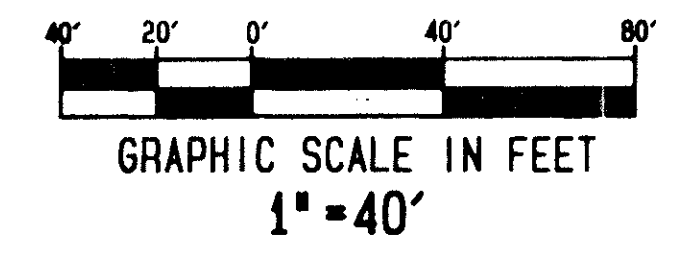
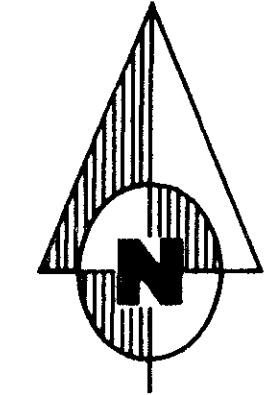
REPLAT OF A PORTION OF TRACTS 57 AND 58, ALL OF TRACT 64, BLOCK 60, ACCORDING TO THE PLAT OF PALM BEACH FARMS COMPANY PLAT No.3, AS RECORDED IN PLAT BOOK 2, PAGES 45 THROUGH 54, INCLUSIVE, PUBLIC RECORDS OF PALM BEACH COUNTY, FLORIDA; AND ETERNAL LIGHT MEMORIAL GARDENS - PLAT IV, ACCORDING TO THE PLAT THEREOF AS RECORDED IN PLAT BOOK 69, PAGES 6 THROUGH 7, INCLUSIVE, PUBLIC RECORDS OF PALM BEACH COUNTY, FLORIDA; AND A PORTION OF ETERNAL LIGHT MEMORIAL GARDENS - PLAT II, ACCORDING TO THE PLAT THEREOF AS RECORDED IN PLAT BOOK 54, PAGES 168 THROUGH 169, INCLUSIVE, PUBLIC RECORDS OF PALM BEACH COUNTY, FLORIDA.

LYING IN SECTION 31, TOWNSHIP 45 SOUTH, RANGE 42 EAST, PALM BEACH COUNTY, FLORIDA.

JANUARY 1998
SHEET 4 OF 5



Per. 79-137



- LEGEND:**
- P.B. PLAT BOOK
 - PG. PAGE
 - P.R.M. PERMANENT REFERENCE MONUMENT
 - Δ DELTA ANGLE
 - ARC LENGTH
 - CHORD BEARING
 - O.R.B. OFFICIAL RECORD BOOK
 - D.B. DEED BOOK
 - D.P. DRAINAGE TRACT
 - F.P. & L. FLORIDA POWER & LIGHT CENTERLINE
 - DENOTES SET P.R.M. UNLESS OTHERWISE NOTED
 - DENOTES FOUND P.R.M. AS NOTED
 - ◻ DENOTES SET PERMANENT CONTROL POINT (P.C.P.)

- NOTES:**
- COORDINATES, BEARINGS, & DISTANCES**
- COORDINATES SHOWN ARE GRID
 - DATUM = NAD 83 1990 ADJUSTMENT
 - ZONE = FLORIDA EAST
 - LINEAR UNIT = US SURVEY FEET
 - COORDINATE SYSTEM = 1983 STATE PLANE
 - TRANSVERSE MERCATOR PROJECTION
 - ALL DISTANCES ARE GROUND
 - SCALE FACTOR = 1.00001871
 - GROUND DISTANCE x SCALE FACTOR = GRID DISTANCE
 - BEARING ROTATION PLAT TO GRID 00°28'06" COUNTERCLOCKWISE

TRACT 83 BLOCK 60
PALM BEACH FARMS CO.
PLAT 3
(P. B. 2, PG. 50)

TRACT 82 BLOCK 60
PALM BEACH FARMS CO. PLAT 3
(P. B. 2, PG. 50)

TRACT 81 BLOCK 60
PALM BEACH FARMS CO. PLAT 3
(P. B. 2, PG. 50)

0916-003

82/72

Dailey-Fotorny, inc.
land surveyors - planners
5050 10th Avenue North Suite A - Lake Worth FL 33463-2062
Phone: 561-965-8787 Fax: 561-965-8863